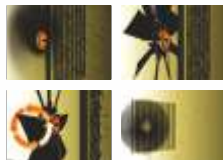


SUGARCANE HARVESTER - Shaktiman 3737



ADVANCED TRACKING SYSTEM

GPS enhancement provides SMS & web supervisor features which facilitate location of harvester and information on performance data



AUTO CLEANING SYSTEM -

This technology helps in cleaning the radiator at regular interval to remove the dust which can choke the radiator fins. Maintains engine temperature within limits.



CONTROL PANEL -

Cabin has electronic controller which displays key performance parameters like:

- Engine temperature
- Hydraulic oil level & temperature
- Fuel level
- Battery voltage etc.

World's Largest Manufacturer of Rotary Tiller

SUGARCANE HARVESTER - Shaktiman 3737

Engine		Crop divider	
Make	Cummins	Distance Between the Tips	1100 mm / 43.3 inch
Series	B 5.9	Spiral Angle Degree	30°-32°
Power	173 HP	Height Adjustment	Hydraulic
Cylinder Volume	5.9 Liters	Lower Section	Hardened Shoe
Number of Cylinder	6	Feed rollers	
Aspiration	Turbo/After Cooler	Number of Rollers	11
Transmission		Number of Rollers on the Roller Train	8
Type	Hydrostatic	Drive	Hydraulic & Reversible
Travel Speed	Variable up to 15 km/hour	Upper Rollers	Floating
Capacity		Chopper	
Fuel Tank	208 Liters	Number of Knives per Drum	3
Hydraulic Oil Tank	130 Liters	Deflector Plates	Adjustable
Tyres		Knock down roller	
Front	10.5 / 65-16, 14 PR	Height	Adjustable
Rear	16.9 x 28, 12 PR	Angle Degree	50°
Topper		Extractor	
Height Variation(mm / inch)	1050-2800 / 41.3-110.2	Number of Blades	3
Height Adjustment	Hydraulic	Hood	Directional
		Elevator	
		Drive	Hydraulic & Reversible
		Turning Angle	168°
		Weight	8300 Kg

The company reserves absolute rights to modify the specifications of machine and components therein without any prior notice.

*Accessories shown are not part of standard equipment.



ROOF TOP AC

Efficient Air Conditioning, Highly comfortable to operator resulting in More Productivity



FAN ASSEMBLY

Removes impurities like dirt, mud etc. from the canes before delivering into container. This dynamically balanced fan assembly ensures clean canes to sugar factories resulting in more recovery



STABILITY -

It has rear tyres of 16.9 x 28 inch size which offers maximum stability and low soil compaction to facilitate working in challenging conditions.



ENGINE ASSEMBLY

Six cylinders 174 HP water cooled diesel engine designed to perform optimum



DOUBLE CROP DIVIDER

This comes as a standard feature ensuring harvester takes cane from targeted row only & deflects cane from adjoining row to avoid chocking



OPERATOR CABIN -

Air conditioned spacious cabin has comfortable driver seat with height adjustment & joy stick controls for individual functions.



24X7 AVAILABILITY OF SERVICE



HYDRAULIC SYSTEM -

Robust hydraulic system run by efficient hydraulic motors & pumps ensuring flawless functioning of harvester



(MAIN)BASE CUTTER -

Heavy duty adjustable cutter cuts cane efficiently, both the blade holders rotate in opposite direction which cut the cane at ground level



VISIBILITY-

Curved profile of engine enclosure behind operator enable better rear view for driver to align with infielder or turning.



Tirth Agro Technology Pvt. Ltd.

"SHAKTIMAN", Survey No.-108/1, Plot No. B, NH-27, Nr. Bharudi Toll Plaza, Bhunava (Village), Taluka: Gondal, Dist.: Rajkot. State: Gujarat- INDIA, Pincode-360311

☎ +91 (02827) 234567, 270537 📠 +91 (02827) 270457

✉ info@shaktimanagro.com, 🌐 www.shaktimanagro.com, CIN: U72900GJ2000PTC 038435



Scan to Visit Website



KRISHI UDAAN @ Pune

World's Largest Manufacturer of Rotary Tiller